

FEBRUARY 2016



**Tena Koutou
Katoa
Greetings to all
from
President DALE
WEBB**

As you can perhaps imagine each time there is a newsletter a little cloud appears above the Presidents head and inside it lives the question "what shall I write about this time?" While that cloud was forming the Editor was reviewing which of our members to feature on this occasion and as usual we have two very interesting people. What came out of that is what a diverse, intriguing bunch the members of the MHS are; I only know a fraction of what most of you have done in your life but it covers such a variety of activities and interests. One of those interests is radio, I'm sure those of you that have walked past the Radio Shop in Beavertown have heard the fine period music that is always playing. That music is actually available 24/7 from Brayshaw Radio, 107.1 FM. It has been quietly on air for some months now and a number of friends have commented on it very favourably but I had not listened to it thinking it would not be available out at Tua Marina, but it is. A station that plays heritage music all the time, doesn't play the same song twice in the same day and has no ads has to be the answer. So if you haven't tried 107.1 on your radio I really recommend it. At present as well as appropriate music it has other classics such as the Goon Show and Hancock's Half Hour along with the dulcet tones of CE Steve Austin as the station identifier. We will though soon start to add notices for events and other items of interest in the heritage world when they are coming up. If there is anything else you would like to hear (as long as it's out of copy write as our royalties budget is really sparse) please let Steve or me know and we'll pass that onto Sam our Station Manager. So if you want a smile, trial 107.1FM on your dial.

My thanks to those members that attended the Special General Meeting on Sunday the 17th January. The meeting received and approved the audited annual accounts for the financial year to 30 June 2015. The accounts showed another year of modest financial growth and good stewardship with a pleasing surplus of income over expenditure. The other agenda item was the rule change necessary to transfer most of our activities and what I call business assets to the Marlborough Heritage Trust; after discussion that was approved by a majority well in excess of the necessary 75% of those present. The discussion included the suggestion that the terms of transfer ensure the MHS collection will always remain housed in the Museum and other buildings on Brayshaw Park even if the Trust should for some reason be wound up. That was a very constructive proposal and will be implemented.

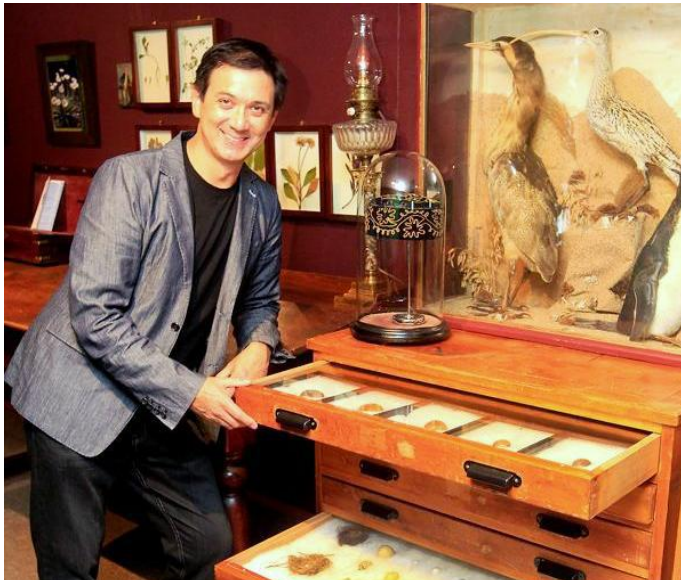
On the topic of the Trust the last page of the newsletter is a poster on their Pop-Up Museum, having already seen it at Wairau Valley, the location it first "popped up" it's well worth seeing now that it's come to town.

Finally we are about to start our summer trip program - details (and some great photos - Ed) included later in the newsletter. We are also at the planning stage for this year's Sunday Series so if there is anything you would like to see or hear about or perhaps even speak about please let us know; it's always better when the topics are what you want to know about. As always many thanks for your ongoing support as we continue to celebrate Marlborough's marvellous heritage.

Dale Webb

dale@vinastra.co.nz

From the **CHIEF EXECUTIVE**



During the just ended school holidays we ran two Family Fun with Snails days. They taught kids something about our special Marlborough Snails through a reading of the "Watch Out Snail" story, a book about slime and survival. Some photos of the kids and **Sheldon**, the Museum's resident snail. (He may be **Slimy Sheldon** but he actually is a very nice, well behaved snail and great with kids; he also never eats our precious native plants - Ed)



Sheldon and friends!



Our local history experts also had a great meeting with the new Editor and reporters of the Marlborough Express. Kevin Andrews, John Orchard, Barry Holdaway, Meagan Ross and Steve Austin met the new Editor Nicola Coburn at the new Express office. The next photo is of John, Nicola and Kevin in the Express office.



PEOPLE

In this newsletter we welcome as new members of the MHS Natallia Shabanava, Teresa Besley and Rogen Gray. We look forward to seeing and meeting you at some of our activities in future.

SUMMER TRIPS

Trip to Perano Whaling Station 28th Feb

2016. Please put this in your diary; another trip guided by John Orchard (Mr Marlborough History) and Barry Holdaway; cost will be \$45 pp for members and \$50 pp non members. Bookings at the museum with payment on booking. Those attending will need to take lunch and

drink along with suitable clothing. Leave at 9.00am from the Beachcomber jetty at the Picton town wharf.



The Whaling Station in full operation in 1956.

Port Underwood 20th March. Costs for this trip, guided by John Orchard and Port Underwood specialist Barry Holdaway will be \$30.00 for MHS members and \$35.00 for non members. The bus will leave Brayslaw Park at 9 am and also pick people up at the Tuamarina School Car park at approximately 9.15 am. Bookings to be made at the Museum with payment required before a booking is confirmed. Those going will need to bring drink, food and suitable clothing. Those wanting to be picked up at Tuamarina should indicate this requirement when booking.



A very early picture from the Port; is it the Guard family at Kakapo Bay or somewhere else?

Woodbourne Farm 10th April. The history of Woodbourne farm is amazingly rich with aviation, agricultural, military and other firsts, something for all. There will be no cost to this as those going will make their own way there. Meet at Woodbourne Farm at 10.00am where John and Lynne Walsh will be our hosts and guides. John, a life member of the MHS has lived on Woodbourne Farm from the day he was born and has a matchless depth of knowledge and passion for the history of his birthplace. Again it is strongly recommend that those going bring drink, food and suitable clothing.

If you require directions they will be available from the Museum Office.



The "Radio Horse", the communication section of the Nelson Marlborough West Coast Mounted Rifles at their annual camp at Woodbourne Farm in the 1930s. Just one snippet of the extensive history of this property.

MEMBER PROFILES

This time we feature life member Kevin Andrews, a Past President of the MHS and long term member and author Brenda Carr.

M.H.S. HONARY LIFE MEMBER KEVIN ANDREWS



HOW LONG HAVE YOU BEEN A MEMBER OF THE MHS:
Since the late 1970s not sure of the exact year.

WHY DID YOU JOIN THE SOCIETY: My father paid my subscription for a couple of years and then conned me into going to a meeting. It was an AGM and he put my name forward for the committee. I suggested to him that I had to be a member to go on the committee. His answer: Why do you think you have been getting a newsletter for the last two years?

WHAT WAS YOUR PREVIOUS OCCUPATION: Spent 42 years on the local newspaper starting as an apprentice Hand and Machine Typographer on hot type and moved through the technological change to cold type i.e. computerisation. Spent 10 years beekeeping then tried to retire.

CAN YOU GIVE TWO EXAMPLES OF WHAT YOU DID IN YOUR PREVIOUS OCCUPATION: Operated and maintained The Express linotype machines like the one we put in Beaverton Express office. Enjoyed beekeeping immensely working hives in the Awatere, Marlborough Sounds, Vernon Lagoons, and Raglan areas.

IS THERE ANYTHING ELSE YOU'D LIKE TO SHARE ABOUT YOUR WORK OR INTERESTS:

Have a slight (yeah right Ed.) interest in the history of Marlborough. Enjoy restoring Cob buildings and old churches etc and old ships.

WHAT IS THE THING THAT MHS MEMBERS MAY BE INTERESTED TO KNOW:

I have spent a night on the Edwin Fox. Have climbed every major and many minor peaks in Marlborough and still have a few tramps on the bucket list. Also kayaked through French Pass and around d'Urville Island and a fair bit of the Sounds. Spent 10 days on Stephens Island planting native trees. Helped for a while with the Pelorus Bat recovery project.

Long Term Member and Author Brenda Carr



My childhood days were spent at Robin Hood Bay, a soldiers settlement which dad farmed for 31 years. Primary school education was by correspondence and then by boarding school at Nelson College for Girls. We

left Robin Hood Bay in 1952, well before the Port Underwood access road was formed and went to a small holding at Spring Creek. At that time the Young Farmers organisation was very strong in the neighbourhood and from there the Country Girls Club was founded - the Young Farmers was for boys only, and the Young Farmers formed a sister club called the Country Girls. I was very active in that organisation and held various offices including National President for two years. Geoff Carr and I were married in 1957 and we farmed Stoneleigh at Rapaura, (hence the vineyard and wine label - Ed) for nine years and we had a family of two; we then shifted to the Wairau Valley and farmed Kintyre for 16 years. I was always involved with numerous organisations, at one time holding executive positions on five different committees. From my earliest childhood, living in close proximity to settler families in Robin Hood, I was interested in history. What got me interested in the MHS was at the opening of this Museum building I was involved in the Womens' Division and we catered the opening of the Museum and Archives. At that time someone suggested I should become a member of the MHS and was soon elected to the committee, just another in the number of committees I was a member of. I looked forward to Thursdays, 10am to 4pm working in Archives helping the public with enquiries, indexing and using the computer system. History was also my favourite subject, and got me involved with my own family history. "In Search of a Better Life" published in the late 1980's was the culmination of my interest in my own history. Travel has been my other interest, covering many countries throughout the world including volunteer work for a month in Vanuatu, which was teaching sewing and cooking to a small group of wonderful people.



Brenda's comment adds a dimension to this photo which is of Robin Hood Bay; the Post Office is the centre cottage and opened in 1896 closed 1921. No doubt just co-incidence that it closed the year that Brenda's parents began farming in the Bay. The only historic building there now is a small cottage maintained by Heritage NZ; it is made of cobb and rickers with stone

additions, photo on the next page. The entry on it in the Encyclopaedia of NZ says ... "A small cottage in the bay was probably built by a whaler around 1848. Between 1886 and 1918 it was one of a number of buildings which formed part of a small boys' boarding school; it later had a number of other uses.



FROM THE FRIENDS

BY Toni Gillan



The first thing on my agenda as Marlborough Museum Ambassador was to propose we form a Friends of The Museum group and over the past three years we have, gathering core momentum and intention which is to raise awareness, money for special projects and have some fun doing it. We finished off 2015 at my home with a three course Christmas dinner occasion hosted by Terry and I. On three tables, some 30 people sat down to enjoy a night of fun, laughter and competitive carol singing. A silent auction, with some generous donations to fuel it, raised \$888 dollars, which we, The Friends, have put towards purchasing the amazing Plischke furniture for the Museums' collection (currently in the Museum Foyer - Ed) along with A Fran Maguire Sea Urchin which is so collectable it is a must have museum

piece straight out of her kiln for future generations to marvel over. 2016 and here we are planning events already with a Grand Idea for a Friend's Garden Party with the Theme "Be a friend and Bring a Friend" This will be on Sunday 3rd of April in the Museum Garden Courtyard from 2-4 p.m. A sumptuous Afternoon Tea, Music and of course, FUN. \$20 per person. If I were you I'd put my name down now lest you miss out as numbers are limited.

Toni

ARCHIVES MANAGER



Recently our Archives Manager was featured in the Marlborough Express. For those that didn't see the article or would like to read it again here is a summary of the story.

I pursued a career in history because my education was a library certificate and I've done archive papers through Victoria University. I've always been interested in history and knew that I wanted to have a career there. My everyday routine is to come in and check the emails - we get quite a lot of enquires by email - usually people researching family history and the Marlborough district Council wanting to check subdivision names and I have someone researching the Empire Hotel. So you get a huge range of stuff coming in. We get researchers coming in on Tuesdays and Thursdays asking questions too so we all help with those. (The those is the team of volunteers in the Archives, Meagan has quite a team of very experienced and skilled assistants - Ed).

We get our hands on historical documents, photos and other items when clubs and similar organisations close down or have a throw out, that way a lot of stuff is brought here. Also if an elderly person dies, whoever cleans out their house brings the items they have perceived to have historical value to us. There must be an awful lot of stuff that goes to the tip or to second hand shops, so it would be nice to have first option. It has to have the local context, we want everything to show the history of Marlborough. My advice to the younger generation - it's really hard when you're young because you live in the moment and you think about the future not the past. You don't become aware of it until your elders start to die off and your buildings from

childhood start to disappear and then you suddenly think; "I wish I'd placed more value in these things". It's important to form those bonds and those relationships. The most interesting thing I've seen come into the Museum would be the Dobson Collection, which is a whole lot of documents and letters from Alfred Dobson. It was brought in by his grand-daughter, and we are in the process of bringing it all together. It's a lot of fascinating books, maps and letters. It's really quite interesting. They date back to around the 1600s and 1700s. Most of the books are dated to around the late 1800s right up to 1960. I had a lot of fun going through that one.

HERITAGE DAY 2016

As has been the case for many years now, the 6th February was celebrated at the Park as Heritage Day. The weather was very obliging this year and lots of families enjoyed a great day out. A selection of photos of just a few of the people and places of the day.

bunnies were very popular with the junior set on Heritage Day and were given a lot of stroking, fortunately they are very tame and well used to people.



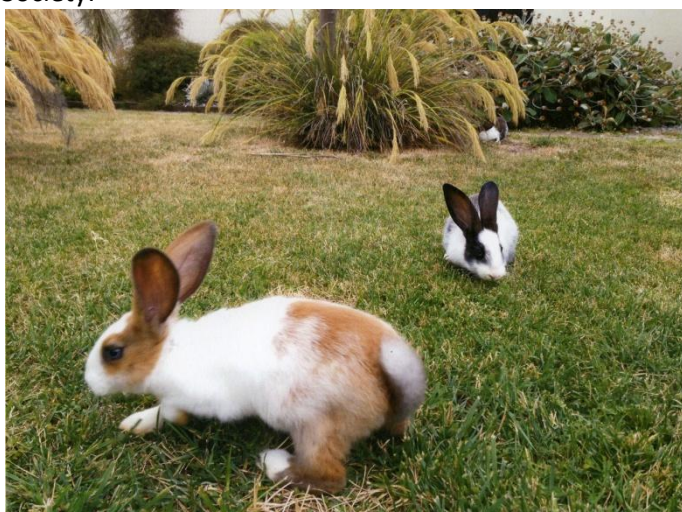
A beautiful day for a sail on the pond.



Our mystery photographer found the following "action shot" at our neighbours the Vintage Farm Machinery Society.



Or a chat and a bit of stitching; as they did last year the ladies of the Marlborough Embroidery Guild took over the Tua Marina church.



Lunch time in the courtyard for two of the visiting rabbits, the third was on her nap break. While about the size of a nearly full grown feral rabbit these Flemish Giants with blue eyes are barely half grown. The



Certainly a time to enjoy the many other delights of the Park. If you didn't manage to make it on the day most of the Park is always there with free entry to the Museum of course to MHS members.

THE SILENT AUCTION

Our Archives have recently received a number of additional books for the library. That gave a double up of some titles so these are available for sale. Rather than set a price it has been decided to run a silent auction. If you wish to bid on any of the titles please either email it to info@marlboroughmuseum.org.nz, or phone it to the Museum at 578 1712. Please include the lot number, price bid and your contact detail in your email. Closing date is Friday the 4th March.

Book Title	Author	Published	Lot No
Scenic Reserves of Marlborough	L.W. McCaskill	1981	1
The School at Ocean Bay	Jonathan Harlen	1987	2
The Geology of the Lower Awatere District	L.C. King M.Sc. F.G.S.	1934	3
Click – A Captured Moment	M.H.S.	2005	4
Old Renwicktown Library and Museum	M Pattie & P Prosser	1991	5
Bragg Descendants in Marlborough	S.P. Dunning	1985	6
Blenheim Borough Centennial 1869-1969	Marlborough Publications	1969	7
Marlborough Journey	A.H. Reed	1963	8
The Marlborough College Register 1900-1960	Various authors	1950	9
Kaikoura A History of the District	J.M. Sheppard	1966	10
A Chronology of Progress – Marlborough Electric Power Board 1973-1983	L.G. Sinclair	1984	11
Kaikoura Coast – Maori History, Traditions and Place-names	W.J. Elvy	1950	12
Historic Place Names of New Zealand	L.S. Rickard	1995	13
The Misty Isle	N.A.R. Barrer	1966	14
One Eyed and Blinkered – Forty Years of Civil Defence in Marlborough	Cynthia Brooks	2001	15
Marshlands School Centenary 1891-1991	Mrs Averil Drew	1991	16
Canvas and Gold – A history of the Wakamarina Goldfield and Lower Pelorus Valley	Norman H. Brayshaw	1964	17
Callout – The Blenheim Volunteer Fire Brigade 1870-1995	Don Stephens	1995	18
A Century of Railways in Marlborough 1876-1976	T. A. McGavin	1977	19
The Days That Are No More	D. Mundy	1953	20
Port Underwood Archaeological Survey	Michael M. Trotter	1975	21
Borough of Blenheim – The First Hundred – The story of the Borough of Blenheim 1869-1969	A Beverley	1969	22
Marlborough is our Homeland	Rex A. Webber	1991	23
Sounds Picnic – Old Marlborough Tales	Ken Fairweather	1990	24
Marlborough – A Provincial History	Marlborough Provincial Historical Committee	1940	25
As High as the Hills – the Centennial History of Picton	Henry D. Kelly	1976	26
As the Years went by Between Grenville and the Rai	L.C.F. Leov	1970	27
Scrutiny on the County	Ken Berry	1986	28
Old Marlborough or The Story of a Province	T. Lindsay Buick J.P.	1900	29
Guards of the Sea	Don Grady	1978	30
1866-1966 Grovetown School (First called Big Bush) – A history and compilation of school records	A.M. Hale	1966	31
Marlborough Whalers at Campbell Island 1909-1916`	J. Timms	1978	32
Tahuahua – The story of Blackwood Bay, Queen Charlotte Sound	D.M. Furness	1974	33
Marlborough Will Shine Tonight – A History of the Marlborough Electric Power Board's First Fifty Years 1923-1973	S.L. Vercoe	1973	34
The Marlborough Club 1872 - 1979	S.L. Vercoe	1979	35
Riversdale – Our Story – A history of Riversdale to celebrate 150 years	Various authors	2009	36
The Story of a New Zealand Family – Daniel and Sally Dougherty	Celia Manson	1974	37



WWI: COMMUNITY SACRIFICE POP UP EXHIBITION 67 Market St Blenheim

This exhibition presented by Marlborough Heritage Trust, has a focus on the men from Blenheim who served in WWI, and the local Marlborough context of the day. Our unique local stories and voices highlighted!

WWI SURVIVOR KIT FAMILY ACTIVITY will engage and inform young people!

EXHIBITION OPEN: Fri 12th Feb – 10.30 a.m. to 3.30 p.m. Sat 13th Feb – 10 a.m. to 2p.m.
Sun 14th Feb – 11 a.m. to 3 p.m.

Watch out for further dates

Contact us to learn about volunteer Exhibition Host opportunities!

Service Club and Larger Group bookings by arrangement, contact:

info@marlboroughmuseum.org.nz or 03 578 1712

Supported by Marlborough District Council, Marlborough RSA, Marlborough Woodworkers Guild with Marlborough Museum

